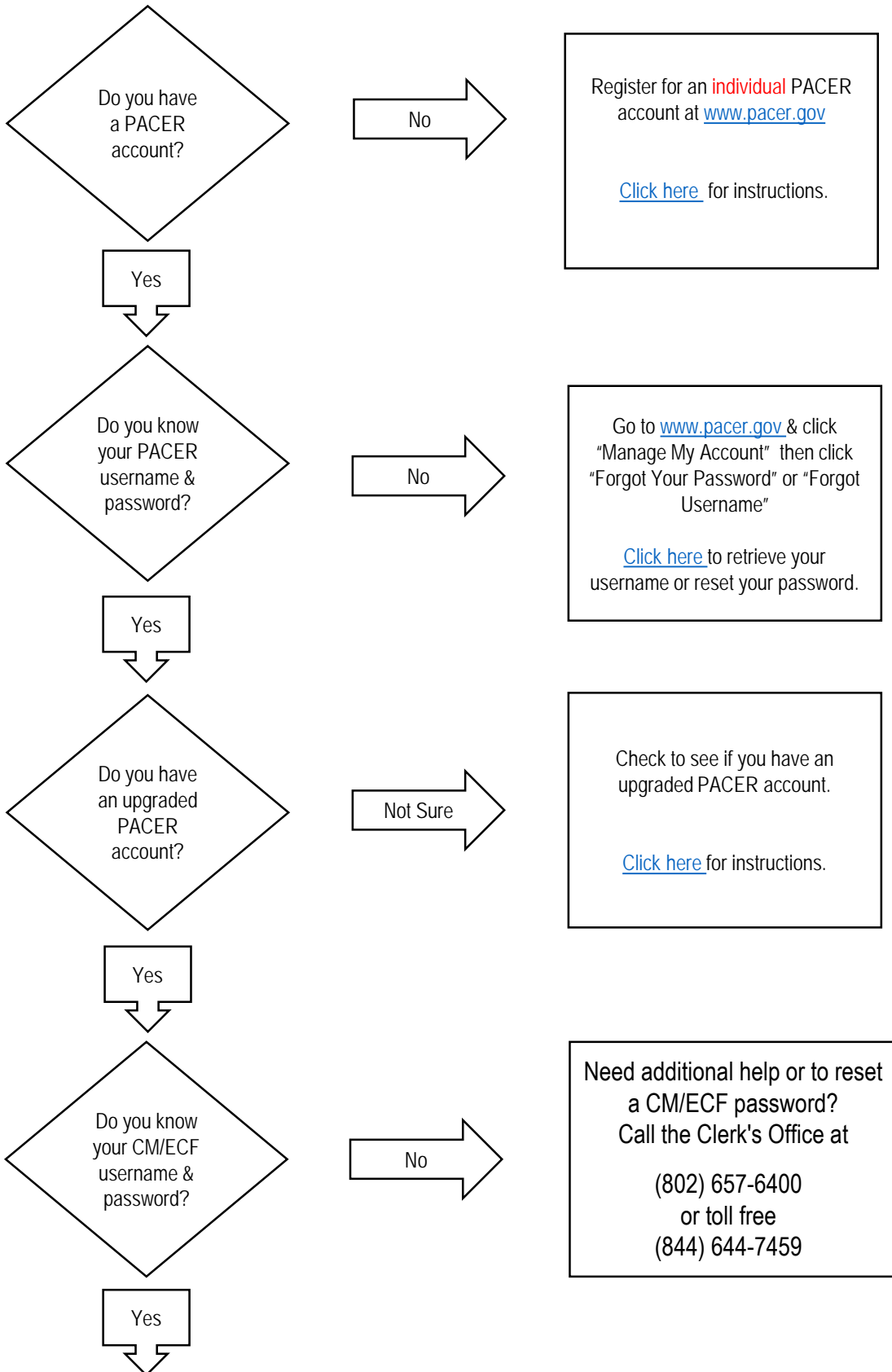


Are You Ready for NextGen?



Do you have a PACER account?

No

Register for an **individual** PACER account at www.pacer.gov

[Click here](#) for instructions.

Yes

Do you know your PACER username & password?

No

Go to www.pacer.gov & click "Manage My Account" then click "Forgot Your Password" or "Forgot Username"

[Click here](#) to retrieve your username or reset your password.

Yes

Do you have an upgraded PACER account?

Not Sure

Check to see if you have an upgraded PACER account.

[Click here](#) for instructions.

Yes

Do you know your CM/ECF username & password?

No

Need additional help or to reset a CM/ECF password? Call the Clerk's Office at

(802) 657-6400

or toll free

(844) 644-7459

Yes

On or after **July 13, 2020** you will need to link your PACER account with your ECF account.

[Click here](#) for instructions.